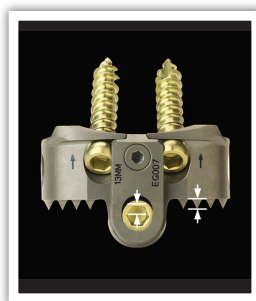


MODULAR IMPLANTS FOR CERVICAL & LUMBAR FUSION



TITANIUM + BONE

TITANIUM + PEEK-OPTIMA®†

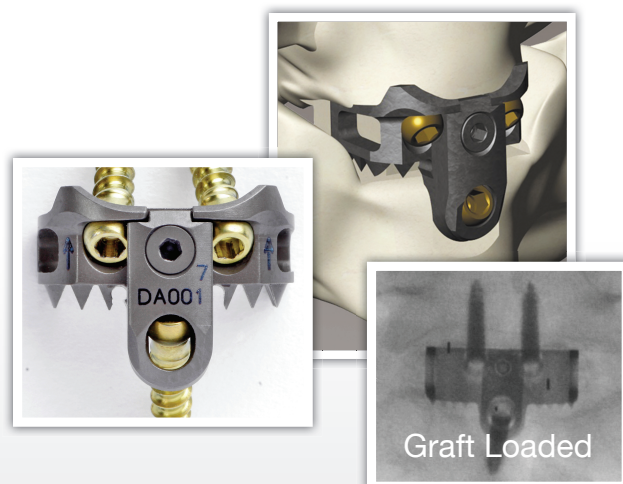
ALL PEEK-OPTIMA®

† Refers to C-Ti only

MODULAR MECHANICAL LOADING

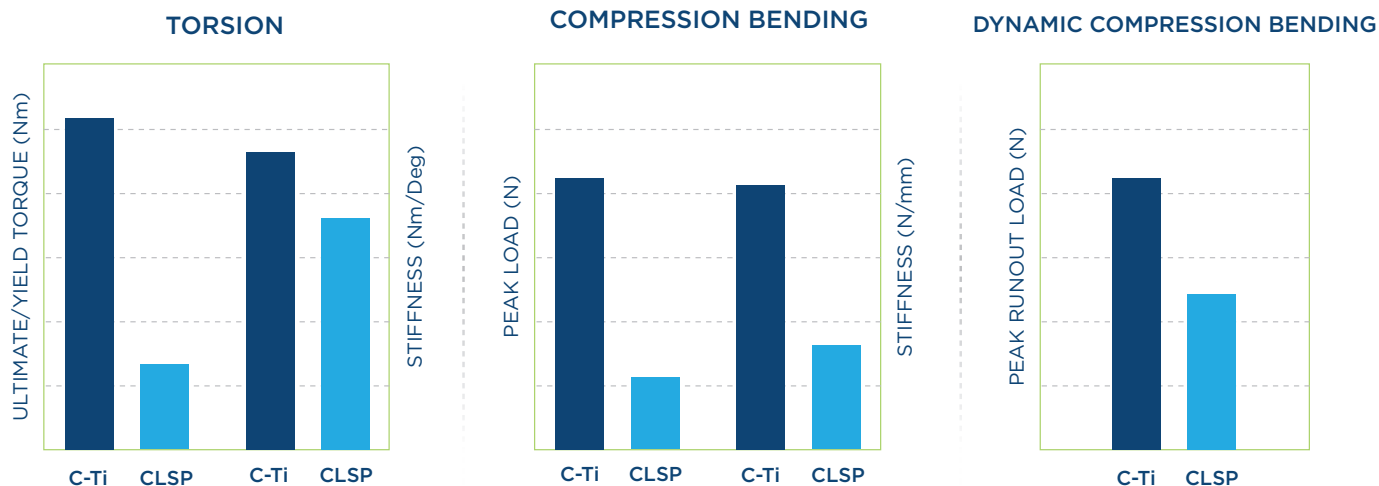
Patented Teeth & Slot Design

- ▶ Permit 1.8 mm of Immediate Graft Loading
- ▶ Implant Teeth provide +>50% more stability††



†† Buttermann et. al. SPINE vol. 9 (2009), 564-573

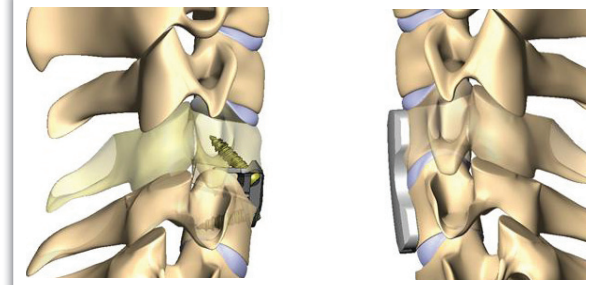
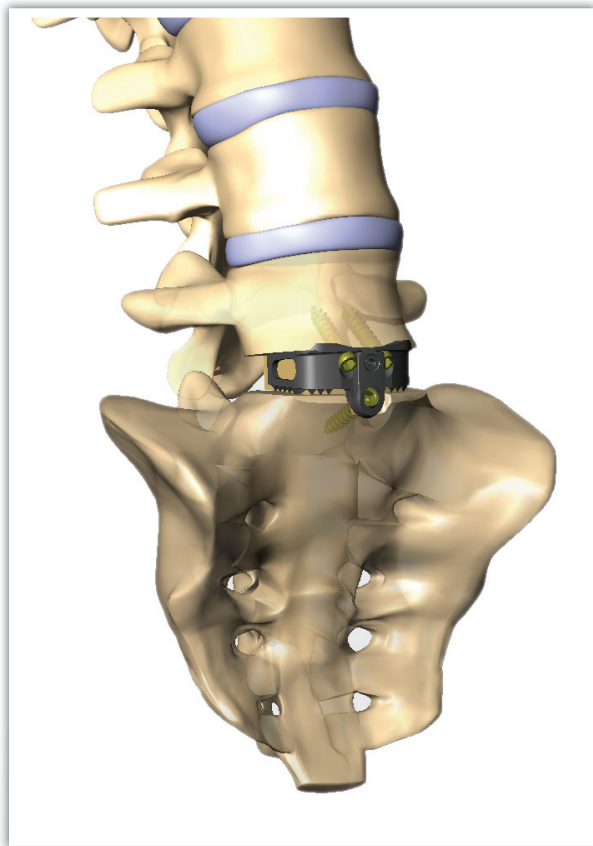
BIOMECHANICAL TESTING



InterPlate C-Ti versus Anterior Cervical Plates

Your material. Your mechanical loading preference... Your patient.

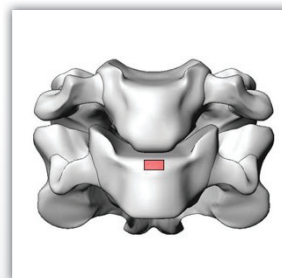
BRIDGING FLUSH-FIT™ PROFILE



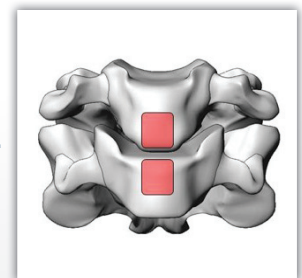
SURGICAL SITE PREP COMPARISON

InterPlate®

Cervical Plates



Vs.

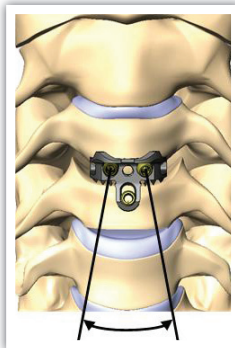


INCISION COMPARISON

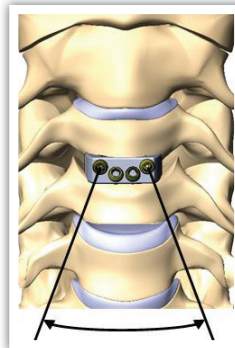
(screw trajectory)

InterPlate®

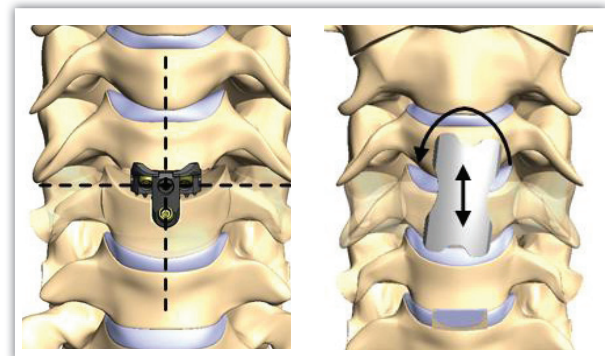
Zero-P™



Less Retraction



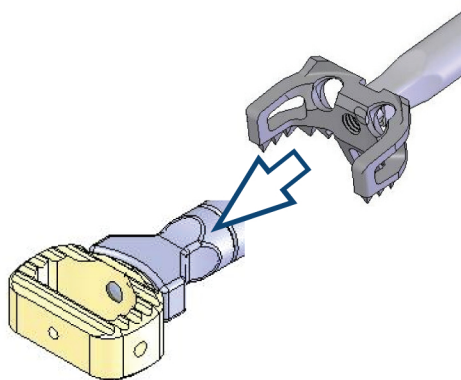
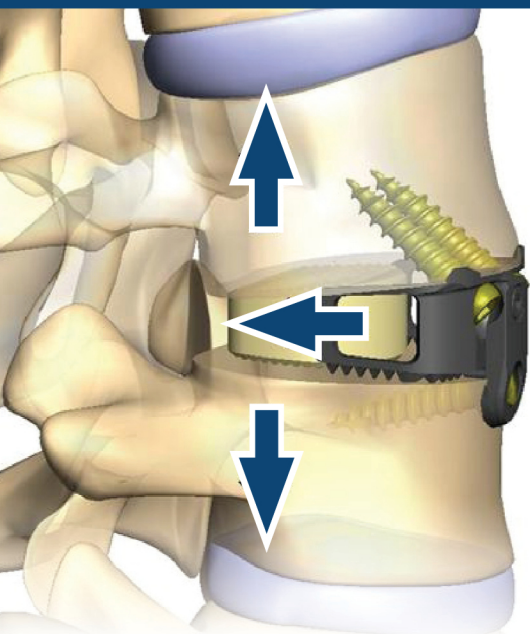
More Retraction



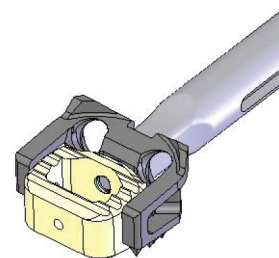
- ▶ Reduce Dysphasia Risk Factors
- ▶ Reduce Vascular Risk Factors

Contact Paradigm BioDevices today for more information (888) 698-7778

SUPERIOR CORRECTIVE FORCE APPLICATIONS

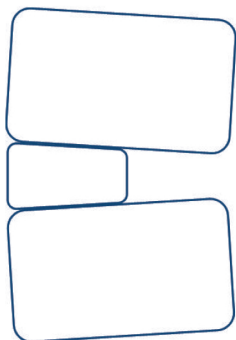


I. TWO-STEP INSERTION

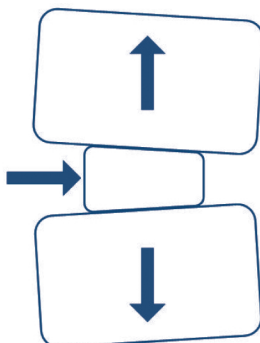


II. ALL-IN-ONE INSERTION

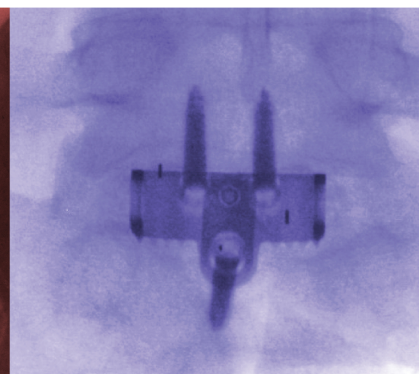
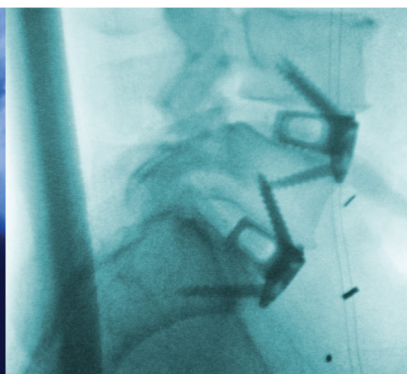
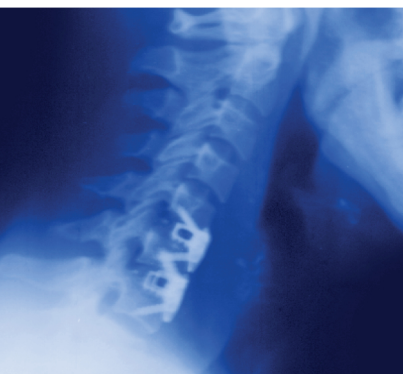
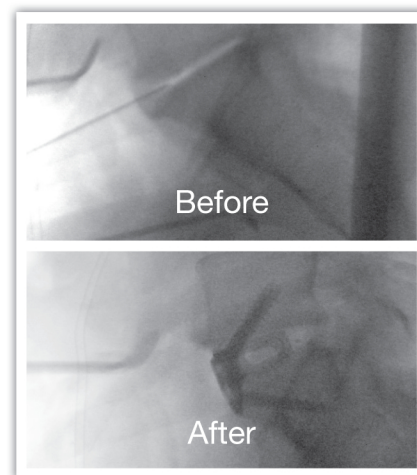
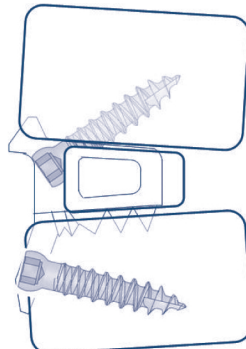
COMPETITIVE DEVICES:
NO OPTION



WITH InterPlate:
COUNTERSINK GRAFT
TO DESIRED DEPTH



InterPlate PROVIDES
FIXATION



ParadigmBioDevices

The Leader in Zero-ProfileSM Technology

800 Hingham St. Ste. 207S Rockland, MA 02370
888-698-7778 www.paradigmbiodevices.com

Refer to package insert for a complete list of warnings, precautions, indications, and contraindications.



PEEK-OPTIMA and
Invivo are registered trademarks of
Invivo Ltd. All rights are reserved

Interplate is trademark of RSB Spine
Flush-Fit is a trademark of RSB Spine
Zero-P is a trademark of Synthes Spine
Zero-Profile is a registered service mark
© Paradigm BioDevices Copyright
Patent Numbers: 6,984,234, 7,985,255 B2,
8,100,976 8,613,772 6,235,034 9,713,537
11,026,802 Other patents pending